

# CERTIFICATE OF LOCATION OF GOVERNMENT CORNER

North Quarter \_\_\_\_\_ Corner of Section 6 , Township 108 , Range 39 , 5th P.M.

STATE OF MINNESOTA, County of Murray

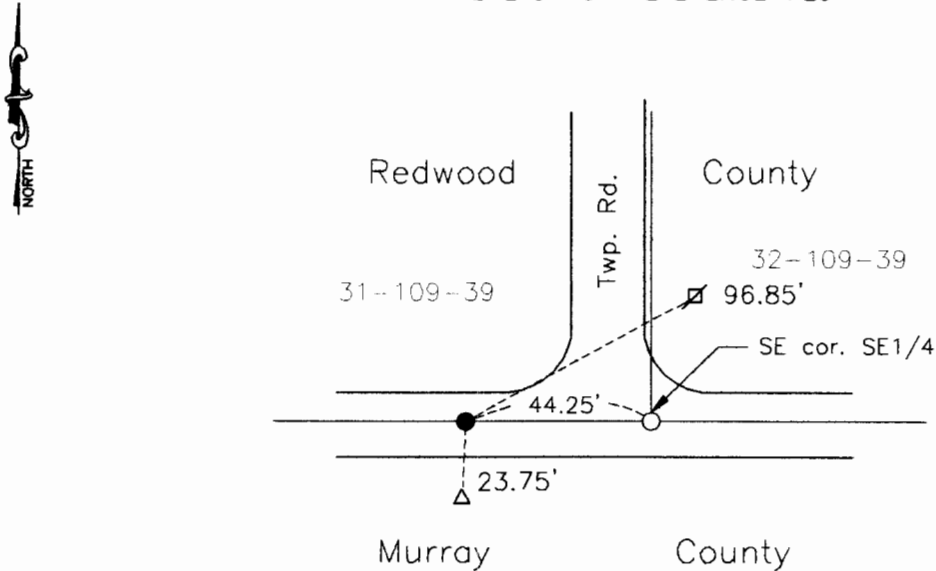
At the corner location shown on the sketch:

On \_\_\_\_\_ found a \_\_\_\_\_  
DATE

left monument as found,  lowered monument,  removed monument (explain)

On Nov. 17, 1998 placed a 5/8" rered with seal #11943  
DATE

### SKETCH OF REFERENCE TIES



Nail and seal in power pole 96.85' NE  
 SE cor. Sec 31-109-39 44.25' E  
 Top of telephone pedestal 23.75' S

Statement of evidence relative to this corner location is on back of page.

I hereby certify that this document and the data contained herein was prepared by me or under my direct supervision.

Lyle E. Moring 11-19-98  
SIGNATURE DATE

Registration No. 11943

Land Surveyor,  Professional Engineer  
 County Surveyor,  County Engineer

### OFFICE OF THE COUNTY RECORDER

County of \_\_\_\_\_

I hereby certify that this document was filed in the Co. Recorders office at \_\_\_\_\_ .M on the \_\_\_\_\_ day of \_\_\_\_\_ A.D. 19 \_\_\_\_\_

County Recorder \_\_\_\_\_

By \_\_\_\_\_, Deputy

DOCUMENT NO. \_\_\_\_\_

Statement of Evidence

On May 13, 1899, J.W. Woolstercraft placed a stone at the corner.

On November 4, 1998, Moseng Land surveying dug with backhoe from G.H. Plumbing of Tracy MN. The hole was 8' X 12' hole and down to clay, we found nothing. We placed 5/8" iron with seal #11943 on line with the NW cor. of Sec. 6-108-39 and SE cor. of Sec. 31-109-39, and proportionately using the distances recorded by J.W. Woolstercraft in the May 1899 survey.